

UCLA COACHES AND STAFF



HEAD COACH BEN HOWLAND



Ben Howland knows how to rebuild a collegiate basketball program. He did it at Pittsburgh and again at Northern Arizona. And he's done it at UCLA.

Entering his sixth year as the Bruins' head coach in 2008-09, Howland has led UCLA to back-to-back-to-back Pacific-10 titles (2006-08) and back-to-back-to-back Final Four appearances (2006-08). He also guided the Bruins to a school-record 35 victories in 2008. Additionally, he has won more games in a three-year span (97 from 2006-08) than any other coach in UCLA history. UCLA also won the 2008 Pac-10 Tournament Championship and finished the year with an overall record of 35-4 and a 16-2 mark in the Pac-10.

He became the first UCLA coach since John Wooden to win three straight conference championships in 2008 and is the only other UCLA coach other than Wooden to earn three straight Final Four

appearances. Also in 2008, Howland became one of just three coaches in NCAA Division I history to win at least 30 games in three consecutive seasons, joining Adolph Rupp (Kentucky 1947-49) and John Calipari (Memphis 2006-08).

In 2007, the Bruins went undefeated at home (16-0) and ended the season with a 30-6 overall record and a 15-3 mark in the Pac-10. Additionally, the Bruins' 65 wins over the last two seasons are the most in a two-year span in UCLA men's basketball history.

In 2006, he directed UCLA to the NCAA Championship game (for the first time since the Bruins' 1995 national title run) and to an NCAA Regional Championship, 32 victories (tying the then-school record of 32 wins set in 1995) and a 12-game winning streak (longest since 1997) entering the NCAA title contest. UCLA also won the 2006 Pac-10 Tournament Championship (first since 1987).

In his 15th year as a collegiate head coach (he's been a Conference Coach of the Year selection in three different leagues - 2006, Pac-10 Coach of the Year at UCLA/2002, Big East Coach of the Year at Pittsburgh/1997, Big Sky Coach of the Year at Northern Arizona) and in his 28th season of collegiate basketball (as an assistant and head coach), he's 126-45 (.737, 171 games) at UCLA, including

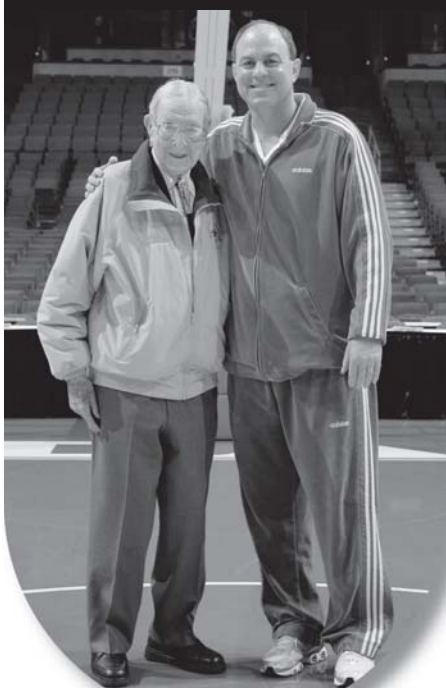
97-17 (.851, 114 games) in his last three seasons as the Bruins' head coach. Howland's career mark is 294-144 (.671, 438 games).

He garnered two National Coach of the Year honors in 2006 - the Jim Phelan Award (CollegeInsider.com) and from Collegehoops.net. Howland was the 2006 Pac-10 Coach of the Year and earned numerous other Conference Coach of the Year honors as well as being named the USBWA Dist. IX and Basketball Times All-West Coast Coach of the Year.

He has led a team to the "Sweet 16" five times in the last seven years — Pittsburgh in 2002 and 2003 and UCLA in 2006, 2007 and 2008. Howland recorded his 50th Bruin win vs. Oregon State (Feb. 23, 2006), his 200th career win on Nov. 19, 2005, vs. Delaware State and won his 250th game in the 70-65 home win over 19th-ranked USC on Feb. 7, 2007.

After a two-year hiatus, Howland led the Bruins back to the NCAA Tournament in 2005 and joined an elite list of college coaches who have led three teams to the "Big Dance" -- 2006 UCLA (NCAA Finalist)/2005 UCLA, 2003 Pittsburgh ("Sweet 16"), 2002 Pittsburgh ("Sweet 16") and 1998 Northern Arizona. Following the 2005 NCAA Tournament, there were only 28 coaches in Tournament history who had guided three different schools to

Coach Howland with Coach John R. Wooden



Has Won 97 Games in the Last Three Years



2007 NABC District 15 Coach of the Year



the Tournament. Howland's overall NCAA record is 17-7 (13-4 at UCLA, 4-2 at Pittsburgh and 0-1 at NAU), and in 2006 he made his first trip to the Final Four as a head coach.

Howland's sound philosophies about coaching and recruiting have the Bruins pointed in a winning direction as he enters his sixth season as UCLA's head coach.

Howland and his talented staff in 2008 recruited a class that ranked No. 1 in the country by many scouting services and national web sites. The class includes the Gatorade National Player of the Year in Jrue Holiday and four other top 50 players (Drew Gordon, Jerime Anderson, Malcolm Lee and a late addition in J'mison Morgan).

In 2004, the Bruins recruited the nation's No. 4 (HoopMasters.com) incoming freshman class -- led by McDonald's All-Americans, point guard Jordan Farmar and guard Arron Afflalo, along with *Parade Magazine* All-American guard Josh Shipp and CalHi Sports All-State center/forward Lorenzo Mata-Real.

The 2005 class featured five of high school basketball's top seniors, considered to be among the best 100 players in North America -- Alfred Aboya, Darren Collison, Luc Richard Mbah a Moute, Michael Roll and Ryan Wright.

In 2006, the Bruins signed three talented players -- McDonald's and Parade All-American James Keefe, Nikola Dragovic and first-team All-CIF guard Russell Westbrook.

In 2007, Howland landed the nation's top freshman, Gatorade National Player of the Year, Kevin Love and the *Los Angeles Times*' Player of the Year, Chace Stanback.

It takes time and hard work to rebuild a program, and there's not a collegiate head coach or staff in the United States that works harder than Howland and his Bruin assistants.

"It's nice to be recognized, but you can never rest on what you've done," Howland said. "You have to keep working, keep pushing to get better. You've got to have good players. No one understands that more than me. I hope to think every year I'm a better coach than I was the year before. You hope to always improve."

UCLA Athletic Director Dan Guerrero knew he had hired a winner on April 3, 2003, when Howland was announced as the Bruins' 12th head coach in the 87-year storied history of UCLA men's basketball.

"Ben Howland is an outstanding basketball coach, one of the best in the

entire country, and he is the man we want to run our program," Guerrero said. "He has built winning programs throughout his career, and we expect that he will return UCLA basketball to the nation's elite. Ben understands that championships are built on defense, intensity, team-work and fundamentals, and those elements are the foundation of his philosophy. His teams come to play every night, and they do an outstanding job on both ends of the floor."

"I am honored to be the head basketball coach at UCLA, and I am grateful to Dan Guerrero for giving me this opportunity. Having grown up in Southern California as a Bruin fan, watching the televised replays of the games was special for me. To now be the head coach of this program is something I dreamed about but never thought possible. I have an appreciation for what UCLA means in the world of college basketball. We should be competing for the Pacific-10 title and a high seed in the NCAA Tournament year-in and year-out, and I look forward to that challenge."

— UCLA Basketball Coach
Ben Howland

HOWLAND AT UCLA

Howland has demonstrated an ability to turn programs around. At UCLA, in just his second season (2005), he guided the Bruins to a third-place finish (tie) in the Pac-10 and back to the NCAA Tournament for the first time since 2002. At Pittsburgh, he took over a losing program, and by his third year (2002), the Panthers were in the NCAA "Sweet 16" and Howland was the consensus National Coach of the Year. In his fourth season (1998) at Northern Arizona, he led the Lumberjacks to their first-ever NCAA Tournament appearance.

In 2008, Howland guided the Bruins to a No. 3 final ranking in the *Associated Press* Poll and a No. 4 ranking in the *ESPN/USA Today* Poll, a 35-4 overall record and a 16-2 Pac-10 record, winning the Bruins' third straight regular season league title and their second Pac-10 Tournament title in three years. The 35

victories were the most in school history. UCLA made its national-leading 18th Final Four appearance in 2008. Since 1975, the Bruins have advanced to 17 NCAA Regionals, including six since 2000 and nine since 1995.

In 2007, Howland guided the Bruins to a No. 3 final national ranking in the *ESPN/USA Today* Poll and a No. 7 ranking in the *Associated Press* Poll (entering the NCAA Tournament), a 30-6 overall record and a 15-3 Pac-10 record, winning UCLA's second-straight regular season conference championship and the school's 29th league title. UCLA made its 17th Final Four appearance in 2007, surpassing North Carolina for the most ever Final Four appearances.

In 2006, Howland directed the Bruins to a No. 7 national ranking (entering the NCAA Tournament), a 32-7 overall record (32 victories tied the then-school record for most wins set in 1995) and a 14-4 Pac-10 record, winning UCLA's first regular season conference championship since 1997 and good for the No. 1 seed in the Pac-10 Tournament (the Bruins won the Pac-10 Tournament, for the first time since 1987). The Bruins' 12-game winning streak going into the NCAA Championship game was UCLA's longest since the end of the 1997 season (when UCLA's 12-game winning streak was snapped by Minnesota in the NCAA Regional Final in San Antonio). The 2006 Bruins will be remembered for their defensive tenacity, allowing opponents only 58.7 points a game overall (39 games/the fourth-lowest total in school history), including 59.3 points in conference games (18 games) and just 56.2 points in NCAA Tournament play (six games).

"Winning championships is all about defense," Howland said. "If you look every year at the Final Four, the best teams in the country always play the best defense. Holding teams to under 40 percent from the field is something that is pretty consistent among Final Four teams."

In just his second season, Howland led the Bruins to an 18-11 overall record, winning four of the last five regular season games, and an 11-7 Pac-10 Conference mark, good for a third-place tie with Stanford. Highlights included returning to the NCAA Tournament for the first time since 2002; a win over nationally-ranked Washington; four come-from-behind victories in Pac-10 play when the Bruins trailed by double-digit deficits; and four players earning Pac-10 Conference honors

HEAD COACH BEN HOWLAND

— senior Dijon Thompson (first team), freshman Jordan Farmar (Freshman of the Year/Honorable Mention All-Pac-10), freshman Arron Afflalo (Freshman All-Pac-10) and freshman Josh Shipp (Honorable Mention Freshman All-Pac-10).

In his first season (2003-04), Howland inherited a program that in the year before, had a losing season. His first Bruin club was 11-17 overall and 7-11 in the Pac-10 (seventh-place tie). The Bruins did start the season 9-3 overall and 5-0 in league play, had wins over NCAA Tournament teams Michigan State, Washington and Vermont and advanced to the Pac-10 Tournament.

HOWLAND AT PITTSBURGH

Howland spent four years (2000-03/89-90 record) building the Pittsburgh basketball program into one of the finest in the nation. In his last two seasons (2001-02 and 2002-03), Howland guided the Panthers to an overall record of 57-11 (83.8 winning percentage ranked second nationally during that period/Pitt was 32-1 at home, including a perfect 16-0 in 2002-03 at the Petersen Events Center). The Panthers also reached the NCAA "Sweet 16" in both years and captured the 2003 Big East Tournament championship.

In 2002-03, Howland led the Panthers to a record of 28-5 and a No. 4 ranking

"Ben is someone I hold in high regard because he has a lot of integrity. He really knows his basketball, and I appreciate the relationship we have been able to establish. Ben is directly responsible for me being able to get to the level I'm at now."

— Brian Shaw, Los Angeles Lakers Assistant Coach, who was a guard on the 2000-02 NBA Champion Lakers' squads. Howland coached Shaw at UC Santa Barbara.

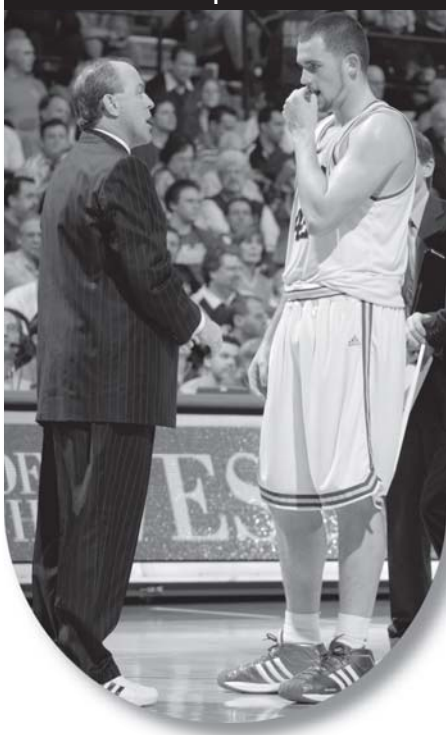
on the final AP poll (Pitt held the nation's No. 2 ranking for eight weeks during the season). Pittsburgh earned a second straight trip to the NCAA "Sweet 16", won a second straight Big East West Division regular-season championship, and on March 15, defeated Connecticut to win its first-ever Big East Tournament title. The Panthers entered their NCAA "Sweet 16" game against Marquette with an 11-game winning streak. Pittsburgh standout point

guard Brandin Knight was a member of the Wooden Award All-American team.

In 2001-02, Howland guided Pittsburgh to a school-record 29 wins, surpassing the former school record of 25 victories set in 1973-74. He became the first Pittsburgh head coach in 26 years to garner National Coach of the Year honors as he earned nine coaching awards, including the Associated Press, Naismith, Henry Iba and The Sporting News national accolades, along with Big East Coach of the Year honors. He led the Panthers to the Big East's West Division regular season championship — the first time Pittsburgh won a Big East men's basketball title of any kind since the 1987-88 campaign. Howland then led the Panthers to their first NCAA tournament appearance in nine seasons (1992-93).

Howland also became the first Pittsburgh coach since Charles "Buzz" Ridl in 1973-74 to lead the Panthers to an NCAA "Sweet 16" appearance, with two NCAA Tournament victories over Central Connecticut State and California in 2002. Including the two NCAA Tournament wins, Pittsburgh went 11-2 over its last 13 games, with its only losses coming in a double overtime defeat in the Big East Championship title game and an overtime loss to Kent State in the NCAA "Sweet 16". Under Howland's direction, Knight earned

Coach Howland Speaks to Kevin Love



Coach Howland with Dick Enberg



Coach Howland at the 2007 Final Four



All-America honors, along with USBWA Dist. I Player of the Year and co-Big East Player of the Year accolades.

In 2000-01, the Panthers surged through the conference tournament to earn a surprising title game berth and won five of their last seven contests. It was in Madison Square Garden in 2000-01 that the college basketball world first began to take notice of Howland and his emerging program at Pittsburgh. That year, he directed Pittsburgh on a dramatic run through the Big East Championship as the Panthers upset three higher-seeded opponents — nationally-ranked Syracuse, Notre Dame and a surging Miami team — to earn the school's first-ever berth in the championship game. That strong finish resulted in a National Invitation Tournament bid, its first postseason appearance in four years.

Howland arrived at Pittsburgh in 1999 with a reputation for developing great shooting teams. Not surprisingly, the Panthers dramatically improved in that regard. But Howland's real imprint on the Panthers was his team's passionate dedication to defense. As a result, Pittsburgh ranked amongst the Big East's best in scoring defense each of Howland's last two years (2002-03, 59.2/2001-02, 60.9).

Howland's influence was evident even after his first season at Pittsburgh (1999-2000/13-15 record). Under Howland's tutelage, Ricardo Greer blossomed into one of the top players in the Big East. Greer was selected by the league coaches as the Big East Co-Most Improved Player in 1999-2000 and concluded his collegiate career as a two-time All-Big East performer.

In Big East Tournament history, Howland is the winningest coach of that event (based on percentage/10 or more games). During Howland's four seasons at Pittsburgh, his Big East Tournament record was 8-3 (72.7). In his last three years (2001-03) at Pittsburgh, the Panthers advanced to the Big East Tournament title game and won the crown in 2003.

HOWLAND AT NORTHERN ARIZONA

Howland orchestrated one of the best turnarounds in NCAA history at Northern Arizona. His highly successful five-year tenure (1995-99) at Northern Arizona saw him transform the Lumberjacks from one of the nation's weakest programs into a consistent NCAA Tournament contender. In

Coach Howland with (l-r) Luc Richard Mbah a Moute, Darren Collison and Michael Roll



his final year (1998-99) at NAU, Howland led the Lumberjacks to a 21-8 record, its third consecutive 20+ win season.

Howland's first two teams at Northern Arizona finished 9-17 (1994-95) and 7-19 (1995-96), finishing in seventh-place each season. However, his 1996-97 squad went 21-7, set the school-record for wins and achieved the 10th best single-season turnaround in NCAA men's basketball history. Northern Arizona captured the Big Sky regular-season championship by three games and advanced to the National Invitation Tournament. Howland was named the conference's Coach of the Year.

The following season (1997-98), the Howland-led Lumberjacks advanced to the NCAA Tournament for the first time in school history after capturing the Big Sky Tournament championship and second straight regular-season title. In its first round of NCAA play against No. 2 seed Cincinnati, Northern Arizona led the heavily favored Bearcats for the majority of the game before falling on a last-second 3-pointer, 65-62. On Sept. 25, 2004, Howland's 1998 Lumberjack squad was inducted into the NAU Athletics Hall of Fame.

During Howland's five-year tenure, Northern Arizona emerged into one of the country's top shooting teams. In 1998-99, NAU became the first team in NCAA history to lead the country in both field goal percentage (.523) and 3-point field goal percentage (.445) in the same season. Additionally, the Lumberjacks led the nation in 3-point shooting in both 1997 (.419) and 1998 (.430), while finishing second nationally in field goal percentage (.516 in 1997/.511 in 1998).

From 1997 to 1998, Howland's teams produced back-to-back conference titles

and also consecutive Big Sky Player of the Year honorees in Charles Thomas and Andrew Mavis. Northern Arizona tied a league record for most conference wins over a two-year span (27) and ranked amongst the nation's Top 30 in wins over that same period. With Howland's success, the city of Flagstaff, Ariz., proclaimed April 27, 1998 "Ben Howland Day."

While the success of Howland's teams on the court is impressive, his programs have also produced top-notch students. In 1998, NAU was one of only two schools in the nation (Utah was the other) to reach the NCAA Tournament and record a team grade-point average over a 3.0.

HOWLAND'S CAREER AS AN ASSISTANT COACH

Prior to his Northern Arizona appointment, Howland served as an assistant coach at the University of California, Santa Barbara for 12 years (1982-83 through 1993-94). During that time, he tutored eventual NBA players Brian Shaw and Conner Henry. He also oversaw the development of UCSB's Eric McArthur, the nation's second-leading rebounder in 1990, and Gary Gray, an All-Big West Conference selection. In Howland's last seven years at the school, the Gauchos advanced to postseason play on five occasions.

HOWLAND'S PLAYING CAREER

Howland enjoyed a standout playing career at Weber State, where he was named the team's Most Valuable Defensive Player in both 1979 and 1980. He led the Wildcats to two Big Sky championships and a pair of NCAA Tournament berths.

HEAD COACH BEN HOWLAND

Howland's basketball legacy of success dates back to his high school days. After beginning his prep career as a highly-decorated player at Dos Pueblos High School in Santa Barbara, Calif., he finished with two Suburban League Most Valuable Player honors at Cerritos (Calif.) High School. He was also a two-time selection to the All-California Interscholastic Federation list. His collegiate career began at Santa Barbara City College in 1975-76 and 1976-77, where he was named team captain and led the Vaqueros to the California state finals in 1978.

Following his collegiate career, Howland spent time playing professionally in Uruguay. He landed his first NCAA Div. I coaching job in the 1981 season as a graduate assistant at Gonzaga University in Spokane, Wash., where he coached future NBA Hall of Fame and Utah Jazz guard John Stockton, before moving to UCSB the following year (1982-83).

THE HOWLAND FAMILY

Howland and his wife, Kim, a former Weber State cheerleader, have two children, Meredith (23), a recent graduate from the University of Pittsburgh, and Adam (21). Howland has a bachelor's degree in physical education from Weber State University (1979) and a master's degree in administration and physical education from Gonzaga (1981).

The Howlands and Fox Sports Net's Christian Steckel



The Howland Family on Vacation in Hawaii in 2008



THE BEN HOWLAND FILE

MISCELLANEOUS

Birthdate: May 28, 1957 in Lebanon, OR

Education: Bachelor of Arts-Physical Education, Weber State University, 1979; Masters Degree-Administration and Physical Education, Gonzaga University, 1981

Date Announced as UCLA Head Coach: April 3, 2003

Family: Wife is the former Kim Zahnow; daughter, Meredith (22) and son, Adam (20)

COACHING CAREER

2003-present — Head Coach, UCLA

1999-2003 — Head Coach, University of Pittsburgh

1994-99 — Head Coach, Northern Arizona

1982-94 — Assistant Coach, UC Santa Barbara

1981-82 — Graduate Assistant Coach, Gonzaga University

COACHING HONORS

2007 — District 15 Coach of the Year (NABC)

2006 — National Coach of the Year (Jim Phelan Award, CollegeInsider.com; Collegehoops.net)

2006 — Pacific-10 Conference Coach of the Year

2006 — District IX Coach of the Year (USBWA)

2006 — West Coast Coach of the Year (*Basketball Times*)

2004 — Howland's 1997-98 Northern Arizona club inducted into the NAU Athletic Hall of Fame

2003 — Dapper Dan Award, honoring Pittsburgh's Sportsman of the Year

2002 — National Coach of the Year (*AP*, *Naismith*, *USBWA*, *ESPN Magazine*, *The Sporting News*)

2002 — USBWA District Coach of the Year

2002 — Big East Coach of the Year

2002 — *Basketball America* Big East Coach of the Year

2002 — *Basketball Times* Big East Coach of the Year

2002 — *Pittsburgh Tribune-Review* City of Champions Award

1997 — Big Sky Conference Coach of the Year

PLAYING CAREER

1980 — played professionally in Uruguay

1978-80 — Weber State — named WSU's defensive MVP on two occasions; led Wildcats to two Big Sky Championships and two NCAA Tournament appearances

1976-78 — Santa Barbara City College — led the Vaqueros to California State finals in 1978

1974-76 — Cerritos, Calif. HS — two-time All CIF; two-time Suburban League MVP

1973-74 — Dos Pueblos HS (Santa Barbara, Calif.)

HOWLAND'S COACHING RECORD

| YEAR | SCHOOL | OVERALL RECORD | PCT. | LEAGUE RECORD | PCT. | HIGHLIGHTS |
|---------|------------------|-------------------|------|------------------|------|---|
| 1994-95 | Northern Arizona | 9-17 | 34.6 | 4-10 | 28.6 | First year at NAU. |
| 1995-96 | Northern Arizona | 7-19 | 26.9 | 3-11 | 21.4 | Second year at NAU. |
| 1996-97 | Northern Arizona | 21-7 | 75.0 | 14-2 | 87.5 | Orchestrated the 10th best single-season turnaround in NCAA history; Big Sky regular season champions; led nation in 3-pt. FG% (41.9) and second in FG% (51.6). |
| 1997-98 | Northern Arizona | 21-8 | 72.4 | 13-3 | 81.3 | Led NAU to first-ever NCAA Tournament bid; Big Sky regular season/tournament champions; led nation in 3-point FG% (43.0) and second in FG% (52.3). |
| 1998-99 | Northern Arizona | 21-8 | 72.4 | 12-4 | 75.0 | First team in NCAA history to lead the nation in both FG% (52.3) and 3-pt. FG% (44.5). |
| 1999-00 | Pittsburgh | 13-15 | 46.4 | 5-11 | 31.3 | First season at Pittsburgh. |
| 2000-01 | Pittsburgh | 19-14 | 57.6 | 7-9 | 43.8 | NIT Second Round; Pittsburgh's first winning season since 1996-97; advanced to the Big East title game. |
| 2001-02 | Pittsburgh | 29-6 | 82.9 | 13-3 | 81.3 | Consensus National Coach of the Year; won school record 29 games; led Pittsburgh to Big East West title, first Big East basketball title of any kind in 14 years; advanced to NCAA "Sweet 16"; first NCAA Tournament appearance since 1992-93; led Pittsburgh to second straight Big East Championship title game. |
| 2002-03 | Pittsburgh | 28-5 | 84.8 | 13-3 | 81.3 | Guided Pittsburgh to two consecutive NCAA "Sweet 16" appearances; led Panthers to first-ever Big East Tournament title, third straight Big East Championship game, second straight Big East West title and Big East regular season crown; led the Panthers to school-record tying 13+ win Big East season and second straight 20+ win season. |
| 2003-04 | UCLA | 11-17 | 39.3 | 7-11 | 38.9 | Guided UCLA to a 9-3 start and three wins over NCAA Tournament teams. |
| 2004-05 | UCLA | 18-11 | 62.1 | 11-7 | 61.1 | Led UCLA to its first NCAA appearance since 2002; only 28th coach to lead three schools to the NCAA Tournament; tied for third-place in the Pac-10 Conference. |
| 2005-06 | UCLA | 32-7 | 82.1 | 14-4 | 77.8 | Guided the Bruins to their first Final Four appearance since 1995 and reached the title game; won the 2006 Pacific-10 Conference regular season and tournament titles; 32 victories ties school record. |
| 2006-07 | UCLA | 30-6 | .833 | 15-3 | .833 | UCLA finished the year ranked third in the <i>ESPN/USA Today</i> poll and seventh in the <i>Associated Press</i> poll. Guided UCLA to its first-ever Maui Invitational championship title on Nov. 22, 2006 and its second straight Pac-10 Championship and Final Four. |
| 2007-08 | UCLA | 35-4 | .897 | 16-2 | .889 | Finished his fifth year at UCLA with an overall record of 126-45 (.737); won the CBE Classic with a 68-63 victory over No. 10 Michigan State and guided the Bruins to their third straight Pac-10 Championship and Final Four. Also won the 2008 Pac-10 Tournament title. |
| Totals | 14 Years | 294-144 | 67.1 | 147-83 | 63.9 | Six NCAA bids; three Final Fours and five "Sweet 16" appearances; Seven conference titles; 2002 consensus National Coach of the Year; 2006 Pac-10 Coach of the Year. |

HOWLAND'S RECORD VS. ALL OPPONENTS

| OPPONENT | W-L | OPPONENT | W-L | OPPONENT | W-L | OPPONENT | W-L | OPPONENT | W-L |
|------------------------|------|-----------------------|-----|--------------------------|-----|-------------------|-----|--------------------|----------------|
| Alabama | 1-0 | East Carolina | 0-1 | Miami (FL) | 3-3 | Pittsburgh | 1-0 | Texas-Arlington | 1-1 |
| Albany | 1-0 | Eastern Illinois | 1-0 | Michigan | 4-1 | Portland State | 5-3 | Texas-Pan American | 2-0 |
| Appalachian State | 1-0 | Eastern Washington | 9-1 | Michigan State | 2-1 | Providence | 3-1 | Texas Tech | 0-1 |
| Arizona | 7-5 | Elon | 1-0 | Mississippi State | 0-1 | Rhode Island | 2-0 | UC Davis | 1-0 |
| Arizona State | 10-4 | Florida | 0-2 | Mississippi Valley State | 1-0 | Robert Morris | 4-0 | UC Irvine | 2-1 |
| Arkansas | 0-1 | Florida International | 1-1 | Montana | 6-4 | Rutgers | 6-1 | UCLA | 0-1 |
| Arkansas-Pine Bluff | 1-0 | George Mason | 1-0 | Montana State | 8-3 | Sacramento State | 7-2 | UC Riverside | 2-0 |
| Belmont | 1-0 | Georgetown | 5-3 | Montana Tech | 1-0 | St. Bonaventure | 2-0 | UC Santa Barbara | 0-1 |
| Boise State | 0-4 | George Washington | 1-0 | Morgan State | 1-0 | St. Francis (PA) | 4-0 | UNLV | 0-1 |
| Boston College | 4-2 | Georgia | 0-1 | Morris Brown | 1-0 | St. Francis (NY) | 2-0 | USC | 7-4 |
| BYU | 1-0 | Georgia Tech | 1-0 | Nebraska | 1-1 | St. John's | 1-2 | Utah | 0-1 |
| California | 12-4 | Gonzaga | 1-0 | Nevada | 1-0 | St. Martin's | 1-0 | Vermont | 1-0 |
| Cal Poly | 1-1 | Idaho | 1-3 | New Mexico Highlands | 1-0 | Sam Houston State | 2-1 | Villanova | 3-1 |
| Cal State Fullerton | 1-0 | Idaho State | 8-3 | New Mexico State | 1-0 | San Diego | 0-3 | VA Commonwealth | 0-2 |
| Cal State Northridge | 6-2 | Indiana | 2-0 | New Orleans | 2-0 | San Jose State | 1-0 | Virginia Tech | 2-0 |
| Cal St. San Bernardino | 1-0 | IUPUI | 1-0 | Norfolk State | 2-0 | Savannah State | 1-0 | Wagner | 2-0 |
| Central Conn. State | 1-0 | Illinois State | 1-0 | North Carolina A&T | 1-0 | Seton Hall | 5-2 | Washington | 5-6 |
| Chaminade | 2-0 | Kansas | 1-0 | Northern Arizona | 1-0 | Sonoma State | 1-0 | Washington State | 9-1 |
| Chicago State | 1-0 | Kent State | 0-1 | Notre Dame | 4-7 | South Florida | 0-1 | Weber State | 3-9 |
| Cincinnati | 0-1 | Kentucky | 1-1 | Notre Dame (CA) | 1-0 | Southern Utah | 3-1 | West Virginia | 5-4 |
| Colorado College | 2-0 | Long Beach State | 2-0 | Oakland | 2-0 | SE Louisiana | 1-0 | Western Kentucky | 1-0 |
| Concordia (CA) | 0-1 | Loyola Marymount | 2-1 | Occidental | 1-0 | SW Texas State | 0-1 | Western Illinois | 1-0 |
| Connecticut | 2-3 | LSU | 1-0 | Ohio State | 2-0 | Stanford | 6-5 | Western Oregon | 1-0 |
| Coppin State | 1-0 | Marist | 1-0 | Oral Roberts | 0-2 | Stephen F. Austin | 1-1 | Wright State | 1-0 |
| Davidson College | 1-0 | Marquette | 0-1 | Oregon | 8-2 | Syracuse | 4-5 | Xavier | 1-0 |
| Delaware State | 1-0 | Maryland | 1-0 | Oregon State | 9-3 | Temple | 1-0 | Yale | 1-0 |
| Drexel | 1-0 | McNeese State | 1-0 | Penn State | 2-1 | Tennessee | 0-1 | Youngstown State | 1-0 |
| Duquesne | 3-1 | Memphis | 1-2 | Pepperdine | 1-0 | Texas A&M | 2-0 | TOTALS | 294-144 |

ASSISTANT COACH DONNY DANIELS



Donny Daniels enters his sixth season as an assistant coach on the Bruins' staff. In 2004, Rivals.com designated Daniels as one of college basketball's Top 25 recruiters.

Before coming to UCLA, Daniels was the men's head

basketball coach at Cal State Fullerton for three seasons (2001-03).

During his five-year tenure at UCLA, Daniels has helped recruit several highly-touted recruiting classes, including the Bruins' 2008 class that ranked No. 1 in the country by many scouting services and national web sites. The class includes the Gatorade Basketball National Player of the Year Jrue Holiday and four other top 50 players (Drew Gordon, Jerime Anderson, Malcolm Lee and a late addition in J'mison Morgan). He also helped recruit the 2004 class that ranked No. 4 in the nation by Rivals.com, the 2005 class that sported five players ranked amongst the Top 100 players in North America.

"Donny's experience as a head coach and running his own program has been

invaluable in helping us build our program here at UCLA," said Bruin head coach Ben Howland. "Donny Daniels has a plethora of talents - from recruiting, to coaching on the floor, to game preparation. In all aspects of dealing with young student-athletes and helping them grow, Donny has continually stressed his players' academic advancement and, of course, helped them develop into better basketball players."

His expertise is evident based on the recent success of the Bruins. UCLA has won back-to-back-to-back Pacific-10 titles (2006, 2007 and 2008) and made three straight trips to the Final Four in those same seasons. Additionally, the Bruins have produced four first-round NBA Draft picks in Jordan Farmar (2006), Arron Afflalo (2007) and Kevin Love and Russell Westbrook in 2008 in his five seasons as an assistant under Howland. UCLA has also had another four players drafted in the second round of the NBA Draft in Daniels' tenure including Trevor Ariza (2004), Dijon Thompson (2005), Ryan Hollins (2006) and Luc Richard Mbah a Moute in 2008.

DANIELS AT CAL STATE FULLERTON

The 2002-03 collegiate campaign was Daniels' third year as the head coach at Cal State Fullerton, his alma mater. After winning only 10 games in his first two seasons (Daniels inherited a Titan program that was on NCAA probation), his 2003 CS Fullerton squad doubled their victories (10),

THE DANIELS FILE

Birthdate: Aug. 3, 1954, in New Orleans, La.

Education: Bachelor's degree in criminal justice from Cal State Fullerton in 1977.

Head Coach at Cal State Fullerton for three seasons (2000-03).

Assistant Coach at Utah for 11 years (1990-2000) under Rick Majerus. During that time, the Utes advanced to the NCAA Tournament on eight occasions and were national runners-up in 1998.

At Utah, Daniels helped develop NBA stars Andre Miller, Keith Van Horn and Michael Doleac.

Three tenures as an assistant coach at Cal State Fullerton, helping to recruit and develop Titan greats Leon Wood, Cedric Ceballos and Bruce Bowen

As the Titan's head coach, he recruited and developed Pape Sow, who was a second-round draft pick by Miami in 2004.

Head Coach, Los Angeles Harbor College (1985-86).

Assistant Coach, Verbum Dei HS (1980-81).

posted a 8-10 Big West record, despite a rash of serious injuries that affected all five returning lettermen. Suiing up as few as seven or eight players for several midseason games, Fullerton had its best conference record in 10 years and reached double figures in victories for the first time in four



years. The Titans beat every Big West opponent except tournament champion Utah State.

On April 20, 2000, Daniels was named head coach at Cal State Fullerton. Prior to being named head coach, Daniels was at Fullerton for two years as a player and had three stints as an assistant coach, including two tenures under George McQuarn, who lettered for two seasons (1962-63) as a catcher on the UCLA baseball team.

Daniels played on Fullerton's first two Div. I teams in 1974-75 and 1975-76 under head coach Bobby Dye. In his senior year, he was selected the top defender on a team that won the school's only conference basketball championship by earning a share of the 1976 Pacific Coast Athletic Association title.

Daniels graduated in 1977 with a degree in criminal justice and returned to Fullerton as a volunteer assistant for the 1978-79 season. He was an assistant in Dye's final season (1979-80) before becoming an assistant at his high school alma mater, Los Angeles' Verbum Dei. As a high school player at Verbum Dei, Daniels played for then-head coach McQuarn.

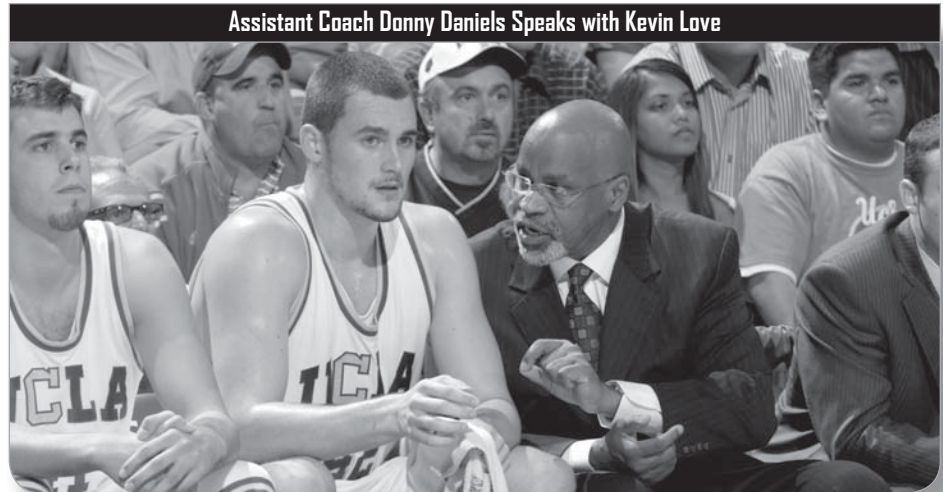
Daniels returned to CSUF as a part-time assistant coach under then-Titan head coach McQuarn for the 1981-82 through 1983-84 seasons before becoming head coach at Los Angeles Harbor College in Wilmington (another alma mater) for two years (1985-86/32-27 overall record, including 20-11 in 1986). His third return to Fullerton was as a full-time assistant to first McQuarn and then successor John Sneed for the 1986-87 through 1988-89 seasons. His full-time coaching tenures at Fullerton coincide with NIT appearances in 1983 and '87 and the recruitment and/or development of former Titan greats Leon Wood, Cedric Ceballos and Bruce Bowen.

Ceballos was a 1990 NBA second-round draft selection. He played 11 years in the NBA with five different teams. His best years were with the Los Angeles Lakers, when he averaged better than 21 points in both the 1994-95 and 1995-96 seasons.

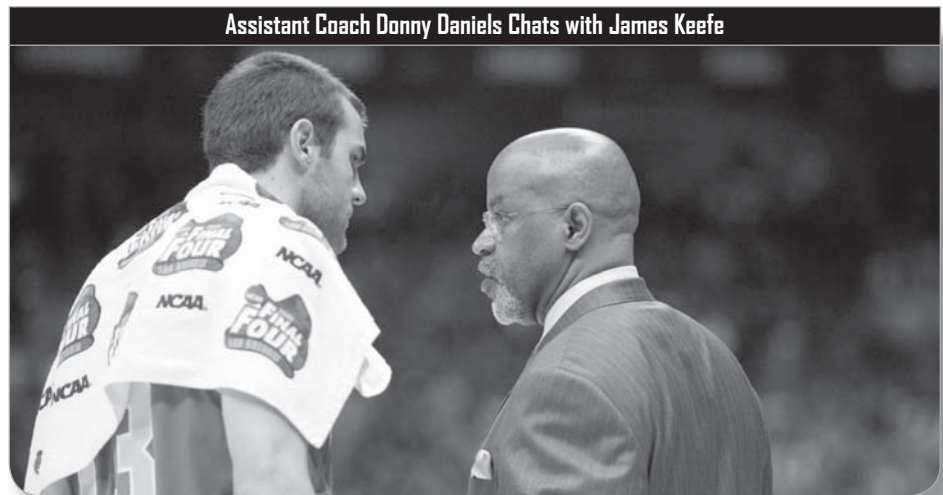
DANIELS AT UTAH

During Daniels' tenure (1990-2000) as a Utah assistant on Majerus' staff, the Utes reached the NCAA Tournament eight times in 11 seasons and were national runner-up in 1998. Daniels was also the chief recruiter of Andre Miller (Miller and his parents made a special trip to attend Daniels' CS Fullerton hiring press conference on April 20, 2000) and Keith Van Horn to Salt Lake City.

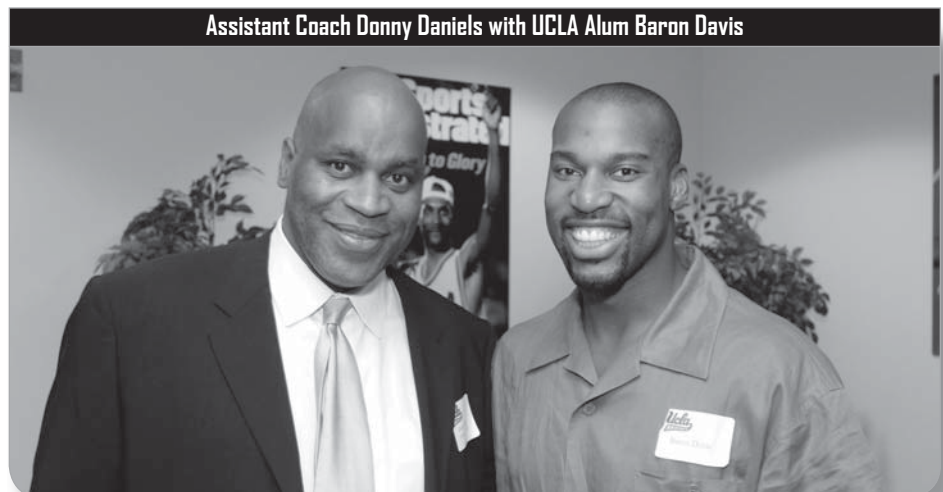
Daniels recruited Miller from his high school alma mater, Verbum Dei. Before his stint with the Clippers, Miller spent three



Assistant Coach Donny Daniels Speaks with Kevin Love



Assistant Coach Donny Daniels Chats with James Keefe



Assistant Coach Donny Daniels with UCLA Alum Baron Davis

years with the Cleveland Cavaliers and in 2002 led the NBA in assists (10.9 apg).

Other players Daniels helped coach at Utah who went on to the NBA include Michael Doleac (12th year in the NBA, second with Minnesota) and Josh Grant (one year with Golden State).

PLAYING DAYS

Before his two-year (1975-76) playing career at Cal State Fullerton, Daniels played for one season at Scottsdale Community College (1973) and for one year at Los Angeles Harbor College (1974).

ASSISTANT COACH SCOTT DUNCAN



Scott Duncan is in his second year as an assistant for head coach Ben Howland. He was hired on April 11, 2007.

He arrived in Westwood after spending seven years as an assistant coach at the University of Oregon (2000-07).

"Coach Duncan comes with a great background

in coaching and is very well-respected as an outstanding recruiter," Howland said. "He is a very experienced coach, an outstanding person, and I feel very fortunate to have with our Bruin family."

Duncan brings 30 years of experience as a major college basketball assistant coach. Recognized as one of the nation's best assistant coaches and top recruiters, Duncan's hard work and dedication paid off in 2007 with Oregon reaching the Elite Eight and winning the Pacific-10 Conference Tournament. That investment continued to pay off with all four freshmen in the recruiting class of 2004 ranked amongst the nation's top 75 players in the country.

During his stint at Oregon, the Ducks won three Pac-10 titles (the 2002 regular-season championship and the 2003 and 2007 Pac-10 Tournament championships). Oregon also reached the "Elite Eight" in the NCAA Tournament twice during that span (2002 and 2007).

Duncan was recently named the eighth-best assistant coach in the country by Hoop Scoop and was recognized as one of the nation's top 25 recruiters by Rivals.com. In 2001, he was noted as one of the hardest-working assistant coaches and one of the nation's best recruiters in a pair of surveys compiled by Rivals.com's Dave Telep. During the summers of 2002-03, he was an assistant on Ernie Kent's USA Basketball Junior National team trials camp staff.

The 52-year-old Columbus, Ohio, native has been associated with Division I programs that have advanced to postseason play 15 of the past 21 seasons. Oregon's 2002 NCAA Elite Eight run marked the first time in his coaching career that his team advanced to the NCAA Tournament.

He officially joined the Ducks' coaching staff in 2000 after spending the previous three seasons under Larry Shyatt, assisting Wyoming to its first postseason berth in seven campaigns in 1997-98 before moving with Shyatt to Clemson the following year. During 1998-99, Duncan helped coach the Tigers to their seventh 20-win season (20-15) in school history, while working with ACC scoring leader Terrell McIntyre. He played a major role in the school signing four of the nation's top 100 recruits.

Encompassing a span that began with a two-year stint at Washington State during the 1995-96 season, Duncan has helped attract recruiting classes that have been recognized among the top 25 in the country seven of the last 10 years, including Oregon's 2003 class (No. 15).

Graduating in 1978 with an undergraduate degree in physical education and economics from the College of Wooster, Ohio, the three-year letterman began his coaching career as a part-time assistant for Ray Dieringer at Cleveland State in 1978-79. Two years later, he joined head coach Gary Colson at New Mexico

THE DUNCAN FILE

Birthdate: Sept. 18, 1955, in Cleveland, Ohio.

Education: Bachelor's degree from the College of Wooster in 1978.

Has 30 years of experience as a major college basketball assistant coach.

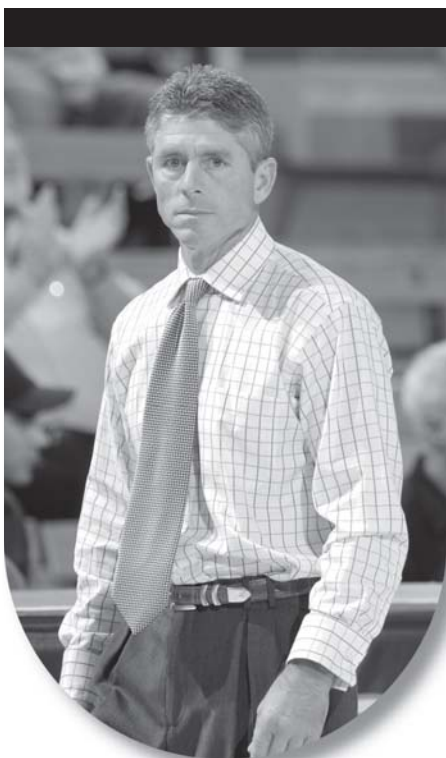
Has been associated with Division I programs that have advanced to postseason play 16 of the past 22 years.

Spent the 1998-99 season at Clemson under Larry Shyatt, helping the Tigers to a 20-win season (20-15), while working with the ACC scoring leader, Terrell McIntyre.

He spent seven seasons (2000-07) at Oregon, helping the Ducks reach the "Elite Eight" twice (2002 and 2007), win the Pacific-10 Conference Tournament twice (2003 and 2007) and the 2002 Pac-10 regular-season championship.

Encompassing a span that began at Washington State in 1995-96, his recruiting classes have been recognized among the top 25 in the country in nine of the last 12 years.

for a 10-year tenure. Duncan also spent time with Colson at Fresno State and then four years at Northern Illinois (1991-92 through 1994-95) under Brian Hammil prior to his stops at Washington State (under head coach Kevin Eastman), Wyoming and Clemson.





Scott Garson is in his fifth season on the UCLA staff and his third as an assistant for head coach Ben Howland.

Garson handles the development of the perimeter players, working on both the offensive and defensive ends. He worked with the post players in 2006-07.

He also assists UCLA

in its recruiting efforts, which last year paid huge dividends as the Bruins landed the No. 1 recruiting class, marking the second year that the Bruins have landed a top 10 class. The 2008 class includes Jrue Holiday, the Gatorade Basketball National Player of the Year, and four other top 50 players (Drew Gordon, Jerime Anderson, Malcolm Lee and a late addition in J'mison Morgan).

His strengths include recruiting, player development, player relationships, scouting of opponents, self-scouting and breaking down of game and practice film. Garson also assists in monitoring the Bruins' academic progress.

Garson served as the Bruins' video coordinator for two seasons (2004-06). His responsibilities included creating all video edits for game preparation; opponent scouting and self-scouting; preparing scouting reports; being a source of information for the Bruin coaching staff regarding the opponents' personnel and strategic tendencies and providing video for all recruiting efforts and special events, including

the production of highlight films.

He also assists with the UCLA boy's basketball summer camps, which he directed his first three years at UCLA.

Prior to coming to UCLA, he served five seasons (1999-2004) on the University of Utah staff under Hall of Fame coach and current St. Louis University head coach, Rick Majerus. Garson was an assistant coach during the 2003-04 season, when he coached Andrew Bogut, who went on to become the No. 1 overall pick in the 2005 NBA Draft by the Milwaukee Bucks. He also assisted in the Utes' recruiting efforts. Garson served as the Utes' video coordinator in 2002-03, and was an administrative assistant and head manager during his first three seasons at Utah while earning his master's degree. He also directed the Rick Majerus Basketball Camps for three summers.

Garson, 32, came to Utah from Pepperdine, where he was the administrative assistant and video coordinator for the Waves during the 1998-99 season under former Bruin assistant and current University of Washington head coach Lorenzo Romar. Garson also served as the director of the Junior Waves Basketball Camp.

In 1995, Garson coached the Los Angeles Maccabi 13-14 year-old basketball team. For two seasons (1996-98), Garson served as the varsity assistant boy's coach and junior varsity head boy's coach at Santa Barbara High School.

Born on April 24, 1976 in Tarzana, Calif., Garson graduated from UC Santa Barbara with a Bachelor's degree in law and society in 1999. He later earned a master of science in exercise and sports science with an emphasis in sport psychology from the University of Utah in 2003.

He spent his freshman season (1994-95) at Washington University in St. Louis, Mo., where he played basketball (guard) and baseball (left-handed pitcher). Garson was a two-time All-League selection in basketball and baseball

THE GARSON FILE

Birthdate: April 24, 1976, in Tarzana, Calif.

Education: Bachelor of Arts degree in law and society from UC Santa Barbara in 1999, Master of science in exercise and sports science with an emphasis in sport psychology from the University of Utah in 2003.

In his five years at the University of Utah, the Utes won four Mountain West Conference championships, participating in four NCAA Tournaments.

As a coach, he has never been a part of a losing season in competition at any level (Santa Barbara High School, Pepperdine, Utah and UCLA).

While at Utah, he coached Andrew Bogut, who went on to become the No. 1 overall pick by the Milwaukee Bucks in 2005.

He has been a part of seven league championship teams and three Final Fours in his 10 years at the college level.

Head junior varsity boy's and assistant varsity boy's coach at Santa Barbara High School for two seasons (1996-98).

and was an All-State performer his senior year (1994) in basketball at Harvard-Westlake High School in North Hollywood, Calif.

His father, Lee (a 1969 UCLA graduate), mother, Corinne and brother, Chad, all reside in the Los Angeles area.

Garson is single and lives in Los Angeles.





Joe Hillock, who spent 10 years as the head women's coach at Southern Utah, was hired on July 6, 2007, as the UCLA men's basketball director of operations, replacing Chris Carlson, who was announced as the head

coach at UC San Diego on June 11, 2007.

"I am very pleased that Joe Hillock has accepted the position of director of operations," said Howland. "Joe brings a wealth of experience and knowledge to our program, and I'm very excited to have him join our staff."

Hillock is Southern Utah's all-time winningest women's basketball coach with 128 victories. He was the Thunderbirds' head coach for 10 seasons (from 1996-97 to 2005-06).

Hillock earned his bachelor's degree in Physical Education at Southern Utah in 1976 and served as an undergraduate assistant women's coach for the first varsity team at SUU during the 1975-76 season. He then went on to the first of two stints as the head boy's basketball coach at nearby Milford

High School (Milford, Utah) from 1978-79. After guiding Milford HS to back-to-back region titles, he served for 12 years (1979-91) as an assistant at Gonzaga (eight years under Dan Fitzgerald and four under his brother, Jay Hillock).

The 56-year-old Santa Barbara, Calif., native completed his master's degree in administration at Gonzaga in 1982. After his stint with the Bulldogs, Hillock moved to Loyola Marymount, where he assisted his brother, Jay, currently the Director of Pro Personnel for the NBA's Chicago Bulls, during the 1991-92 season. After completing the 1992-93 season at LMU, he returned to Milford High as the boy's basketball coach and athletic director from 1993-96 until taking the helm of the women's program at SUU in 1996.

He and his wife, Denise, a former star softball pitcher at Southern Utah in the mid-70s, are the parents of three children, Joe, Jr., Heather and Jordan.

THE HILLOCK FILE

Birthdate: April 14, 1952, in Indianapolis, Ind.

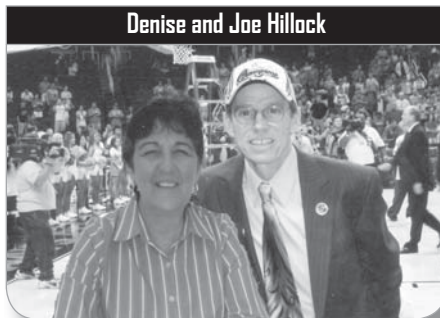
Education: Bachelor's degree in physical education from Southern Utah in 1976, master's degree in administration from Gonzaga in 1981.

Head coach at Southern Utah for 10 seasons (1996-06), winningest women's basketball coach in Southern Utah history.

Assistant Coach at Gonzaga for 12 years (1979-91) under Dan Fitzgerald and his brother Jay Hillock, who is currently the Director of Pro Personnel for the NBA's Chicago Bulls.

Served two stints as the boy's basketball coach at Milford (Utah) High School, the later included the title of athletic director (1978-79 and 1993-96).

Denise and Joe Hillock



The Hillock Children: Joe, Jordan and Heather





MIKE CASILLAS

Student-Athlete Counseling
11th Season
(UCLA '89)

Mike Casillas enters his 11th year in the Athletic Department after being promoted to Director of Student-Athlete

Counseling in 2000. He oversees College of Letters & Science counseling (and full-time counselors) in the Morgan Center and is the student-athlete academic counselor for men's basketball. He served as the Interim Director of Academic Services from 2005-07.

Before coming to the Morgan Center, Casillas for three years worked with the UCLA Orientation Program and served five years at the UCLA Graduate School of Education and Information Studies.



KENNY DONALDSON

Academic Coordinator
5th Season
(UCLA '97)

Entering his fifth year on the UCLA staff as the Bruin men and women's basketball Academic Coordinator is Kenny

Donaldson. Donaldson's main duties include working together with student-athletes, basketball staff and athletic-academic staff to coordinate successful academic progress; meeting with athletes weekly to document and ensure academic progress; coordinating study hall and counseling student-athletes with personal as well as academic issues.

During the 2003-04 season, Donaldson was the part-time Academic Coordinator for the Bruin men's basketball team. His other UCLA counseling experience includes two years (1995-97) as a Peer Counselor in the UCLA Academic Advancement Program and as a Volunteer Counselor in the Academic Support Program for three years (1993-96).

From 2001-03, Donaldson was an assistant basketball coach at Alemany High School in Mission Hills, Calif. In fall 1995 as a student at UCLA, he was an intern on the UCLA Athletic Training Staff.

Donaldson was a three-year basketball letterman (1990-92) at Granada Hills High School.

He earned his BS in physiological sciences (pre-med) from UCLA in 1997, and his master's degree in sports psychology at Long Beach State in 2008.



RYAN EKLUND

Asst. Director of Marketing
3rd Season
(Wisconsin-La Crosse '99)

Ryan Eklund enters his third year at UCLA as Assistant Director of Marketing and oversees all marketing efforts for

men's and women's basketball. Eklund's other duties include overseeing the athletic department's email and database marketing and promoting the annual spring football game.

Eklund helped launch the marketing department's first email opt-in program, the "Bruin Locker Room." He has also been responsible for implementing the department's first all-sport ticket brochure. Eklund also serves on the athletic department's web site committee.

Prior to working at UCLA, Eklund worked in sports marketing roles at Oregon State University (2005-06), University of Arizona (2003-05) and University of Connecticut (2002-03).

Eklund, a 1999 graduate of University of Wisconsin - La Crosse and a former student-athlete (basketball), earned his Master's degree from Springfield College (Mass.) in 2001 and served as an assistant men's basketball coach.



DOUG ERICKSON

Director of Basketball Admin.
17th Season
(San Jose State '90)

Doug Erickson is the dean of the UCLA men's basketball administrative staff, entering his 17th year with the Bruin

program. In his position as Director of Basketball Administration, Erickson is responsible for all internal operations of the basketball program and serves as a liaison between the coaches and senior athletic department administrators and the UCLA basketball family. He is involved in the day-to-day operations of the team, including budgetary matters, team travel, film/video, meals, ticketing and team managers.

Erickson also organizes and serves as the co-director of the UCLA and Ben Howland basketball camps each summer. He helps coordinate virtually every aspect of the camp including housing, meals and camp speakers. The recent UCLA

Basketball Camps were the largest in its history, attracting more than 1,300 campers over a two-month period in each of the last two summers.

He has played an integral role in the Bruins' success since his arrival. The Bruins have appeared in the NCAA Tournament 14 times, reached the Final Four four times, won the NCAA championship in 1995 and captured six Pac-10 titles during Erickson's tenure with the Bruins. He joined the Bruins staff in 1992, after serving two years as an Accountant at Cadence Design Systems, a leading semiconductor company in San Jose, Calif.

Erickson is a native of Eureka, Calif., where he played four years of basketball and graduated from Eureka High School. He earned a bachelor's degree in economics at San Jose State University in 1990. In terms of basketball, his career was shaped by his family, where all six members played at one time or another. He is single and currently resides in Los Angeles.



EMILY FEHER

Administrative Assistant
1st Season
(UCLA '07)

Emily Feher is entering her first season on the UCLA athletic staff as an administrative assistant

for Bruin head coach Ben Howland and UCLA men's basketball.

Her main responsibilities include office management, with executive assistant duties for Howland and his staff.

Feher joined the Bruin Athletic Department in the summer of 2008. She graduated from UCLA in 2007 with a bachelor's degree in psychology. A standout water polo player, Feher played four years at UCLA and started all 107 matches she played in goal for the Bruins, winning three straight national titles to end her career (2005-07). A four-time All-American, Feher was the first goalkeeper in UCLA women's water polo history to win three NCAA titles.

After graduation, Feher played water polo and travelled Australia while living in Sydney for six months.

Feher was born Mar. 29, 1985, in Orange, Calif. She prepped at Foothill High School where she won four CIF Division 1 championships (2000-03) in water polo.

BRUIN SUPPORT STAFF



RYAN FINNEY

Associate SID

3rd Season

(Kansas State '90)

Ryan Finney is in his third season as an Associate SID with the UCLA Sports Information staff after serving 12 years at Cal State

Northridge, including 10 as the Matadors' Assistant Athletic Director/Media Relations.

He is the primary contact for men's basketball at UCLA. Last year, his 2007-08 media guide was named Best in the District by CoSIDA and finished fourth nationally.

While at Northridge, Finney and his staff coordinated 12 NCAA and conference championship events, including the 1995 NCAA No. 4 Softball Regional, the 2001 Big Sky Men's Basketball Tournament and most recently the 2004 NCAA Men's and Women's Outdoor Track and Field Western Regional Championships.

Prior to Northridge, Finney served a two-year stint as a Sports Information Assistant at Purdue (1992-94). He also spent the 1991-92 season as an Assistant Sports Information Director at Norfolk State.

Before his days at NSU, Finney spent two years as an undergraduate intern with his alma mater, Kansas State. Finney also was as a student assistant coach for the Wildcats' women's volleyball program for four years (1987-90) and later served as the interim head coach from December 1990 to May 1991.

Finney has served on the CoSIDA Publications Committee since 1996-97 while serving as a vice chair for the past five years. He has received 25 Citations for Excellence in Publications by CoSIDA, including three Best in the Nation Awards.

Finney earned a B.S. degree in journalism and mass communications from Kansas State University in 1990. He is single and resides in Northridge, Calif.



WES LONG

Asst. Athletic Performance Coach

2nd Season

(Texas '03)

Wes Long is in his second season as an assistant athletic performance coach at UCLA and will be working

directly with the men's basketball program.

A certified Strength and Conditioning Specialist by the National Strength and Conditioning Association, Long has primarily worked with The University of Texas basketball

program.

Long has worked The University of Texas basketball camps as a camp commissioner and coach since 2000. He spent the 2003-04 season as a volunteer graduate manager – office assistant with the Longhorns.

He served as the Longhorns' graduate manager – assistant video coordinator for two seasons (2005-07) and the graduate manager – strength and conditioning for three years (2004-07).

A member of the National Strength and Conditioning Association (NSCA), Long was a four-year letterman and three-time team captain at Stratford High School in Houston, Texas.

Long earned his bachelor's degree in advertising from The University of Texas in Austin in 2003. He later earned his master's degree in Kinesiology from The University of Texas in 2005.



PETE MAGLIERI

Asst. Equipment Manager

7th Season

(LSU '96)

Pete Maglieri returned to UCLA after a five-year hiatus last year and enters his seventh season with the Bruins' equipment staff. He will

work with the sports of men's and women's basketball, men's and women's track and field and men's and women's cross country.

He spent last year in sales. Prior to that, he served as the director of equipment operations for the Tulane Athletics department for four years (2002-06). In that role, he supervised the purchase, maintenance and distribution of equipment for each of Tulane's programs while directing a staff of full-time and student equipment managers.

Prior to arriving at Tulane, he spent five years as an assistant equipment manager at UCLA (1997-2002), where he directed the equipment operations for five teams and worked with the Bruins' football program.

Maglieri earned his bachelor's degree from Louisiana State University in 1996. He was a student equipment manager for the Tigers for four years.

Following graduation, he served an internship with the New Orleans Saints before going to the University of Houston as assistant equipment manager for one season.

A certified member of the Athletic Equipment Managers' Association, Maglieri is married to the former Carrie Bumerts and they have one son, Peter John III, born in August 2008.



CLAY MCKNIGHT

Video Coordinator

3rd Season

(Univ. of the Pacific '00)

Clay McKnight enters his third season as the video coordinator for the Bruins' men's basketball program.

Prior to arriving on the UCLA campus, McKnight spent one season (2005-06) as an assistant coach at UC Riverside.

Before landing with the Highlanders, he served one year (2004-05) as the basketball operations assistant under Henry Bibby and Jim Saia at USC. Prior to that, he spent the 2003-04 season as director of basketball operations at Oregon State.

McKnight is no stranger to college basketball's elite programs, as he was a member of the staff at Syracuse when the Orangemen won the 2003 national championship. He served as director of operations at Syracuse under Coach Jim Boeheim from 2001-03.

McKnight was a three-year letterwinner at the University of the Pacific, finishing his career as the school's all-time leader in free throw percentage at 92.8% (129-of-139), and in third for career three-point field goal percentage at .415 (198-of-477). He had 238 career Big West three-pointers. His 94.9% percentage from the free-throw line as a senior was the best in the NCAA in 2000 and the fourth-best percentage in NCAA history.

McKnight drilled a school-record nine three-point field goals in a Dec. 7, 1998 game vs. Fresno State. He helped the Tigers to a 23-10 record in 1998 and to the Big West Conference title.

He began his career at UC Irvine, earning Big West All-Freshman Team honors in 1996 before transferring to Pacific.

He graduated from Pacific in 2000 with a degree in sports sciences and attained his master's degree from American Intercontinental University in education in 2004.

McKnight played high school basketball for his father, Gary McKnight, at Mater Dei High School in Santa Ana, Calif. During his playing career, the younger McKnight posted a 102-4 record over three years and earned three CIF championships and a Division 1 state title in 1995. He was a two-time South Coast League co-MVP, and among his many achievements, he once set a California high school record by hitting nine consecutive three-point field goals in a game.



CARRIE RUBERTINO SHEARER

Assoc. Head Athletic Trainer
4th Season
(Ohio State '98)

Carrie Rubertino Shearer, who was promoted to Associate Head Athletic Trainer in 2007, is in her third year as the head men's basketball athletic trainer and in her fourth year as a staff member of the UCLA Athletic Training and Rehabilitation Department.

Additionally, she will oversee the rehabilitation of post-operative student-athletes and serve as the athletic trainer for the women's water polo team.

Prior to working with men's basketball, Rubertino Shearer served as the Bruins' athletic trainer for the women's volleyball and softball programs during the 2005-06 campaign. Additionally she served as the athletic trainer for the Bruins' women's tennis squad for two seasons (2006-08), which won the 2008 NCAA national championship.

Rubertino Shearer spent four seasons (2001-05) as an assistant athletic trainer and physical therapist at Santa Clara University. While at SCU, she served as the head athletic trainer for the women's soccer team that won the 2001 NCAA Championship. She also served as the head athletic trainer for the women's basketball and men's and women's tennis programs.

Rubertino Shearer developed the disordered eating policy for the Broncos' athletic department and served on Santa Clara's committee for disordered eating. Additionally, she worked at the MORE Clinic as a physical therapist and as a liaison between student-athletes with post-operative rehabilitation cases and the athletic department.

During the 2000-01 campaign, Rubertino Shearer was an assistant athletic trainer and physical therapist at Stanford University, overseeing the rehabilitations of post-operative injuries and working with the men's and women's cross country and men's and women's track programs.

Before arriving at Stanford, she served as a physical therapist and graduate assistant athletic trainer for the Auburn University football team for two years (1998-2000).

Rubertino Shearer earned her master's degree in Education degree at Auburn University in 2000. She earned her bachelor's degree in physical therapy at Ohio State University in 1998 while a student in the internship program for

athletic training. She actually began her interest in sports medicine while serving as a student athletic trainer at Brecksville-Broadview Heights High School in Ohio.

She married John Shearer, the head athletic trainer at Pepperdine University, on July 8, 2006.



MICHAEL SONDHEIMER

Assoc. A.D./Academic Admissions Services
32nd Season
(UCLA '77)

An associate athletic director for the Bruin athletic department since 1980, Michael

Sondheimer is in his 23rd season coordinating the recruiting efforts of Bruin basketball along with 20 other UCLA sports.

Sondheimer is in his 32nd year as a UCLA athletic administrator after graduating with honors from UCLA with a degree in Communication Studies with Business Emphasis. He works with all 22 coaching staffs as the Associate Athletic Director-Academic Admissions Services. He is involved in all aspects of the academic and admissions process for prospective student-athletes.

He also is responsible for the coordination on-campus recruiting visits and making sure all aspects of the admissions process are handled within the NCAA rules and UCLA departmental guidelines. UCLA has won 61 of its 100 NCAA titles since he became involved with the recruiting and admissions process in 1981-82.

Sondheimer and his staff assist the coaches with on-campus Junior Days conducted during the basketball season, plus spring junior campus visits.

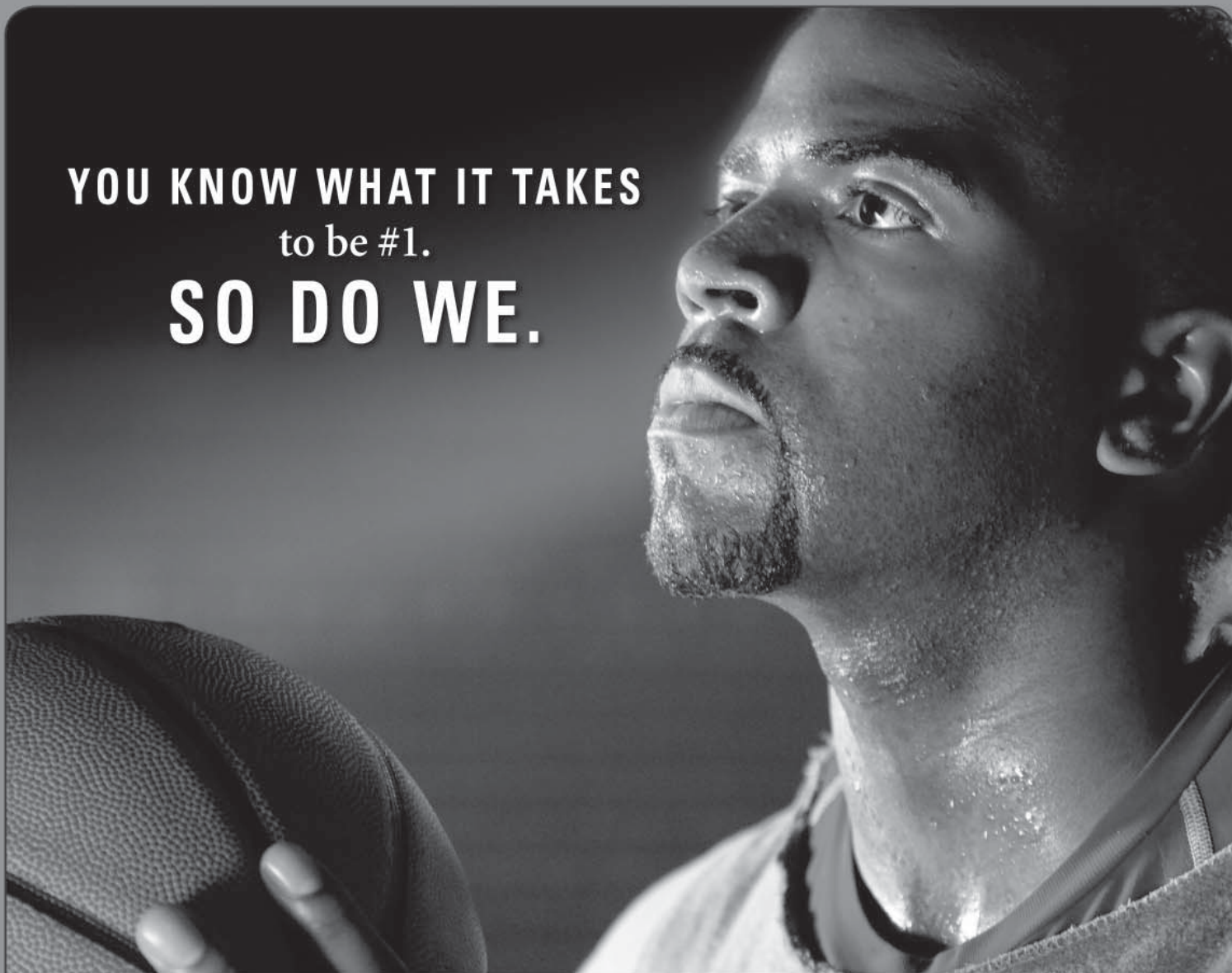
Among Sondheimer's day-to-day academic admissions services responsibilities are assisting with the UCLA admissions process by making sure potential UCLA prospects fulfill the general academic areas such as completing the NCAA Core Classes and taking the correct subject tests.



Team Managers (l-r): Colin Harvey, Andrew Nobe, Spencer Onishi (Head), Elliott Asarch and Justin Lai



YOU KNOW WHAT IT TAKES
to be #1.
SO DO WE.



State Farm® understands the dedication it takes to be the best. With competitive rates and the personal service of a State Farm agent, it's no wonder more drivers choose us than any other company. In fact, we've led the way in car insurance for more than 60 years.

JOIN THE WINNING TEAM. *Call a State Farm agent today or visit statefarm.com®.*

LIKE A GOOD NEIGHBOR



STATE FARM IS THERE.®

Providing Insurance and Financial Services

State Farm Mutual Automobile Insurance Company
State Farm Indemnity Company
Bloomington, IL